

Visual Solutions - BIG PAD Interactive Flat Panel Displays



PN-80TC3

- For demanding office, education and mission critical environments
- Smooth, highly responsive P-CAP 10-point touch with up to 4 users
- Seamless flat bezel for optimised multi-board configurations
- Sharp's unique UV2A LCD technology for high visual clarity
- Sharp Pen Software
- Sharp Display Connect for BYOD
- Sharp Touch Viewer Software for organising collaboration data



PN-60TW3 / 70TW3

- For office and meeting rooms
- Fast and Responsive Infrared (IR) 10 point Touch - up to 4 users
- Sharp Pen Software
- Sharp Display Connect for BYOD
- Pen Digitizer Windows Driver
- SHARP Touch Viewing Software for organising collaboration data
- DICOM Emulation mode for accurate radiological review
- MirrorOp software included to facilitate interactive and engaging meetings



PN-60TB3 / 70TB3

- For office and meeting rooms
- Fast and Responsive Infrared (IR) 10 point Touch - up to 4 users
- Sharp Display Connect for BYOD
- Sharp's unique UV2A LCD technology for high visual clarity
- Sharp Pen Software
- Quick start up and ergonomic anti-glare and scratch resistant screen
- Two built-in stereo loudspeakers



PN-65SC1

- For education and office meeting rooms.
- Fast and Responsive Infrared (IR) 10 point Touch - up to 4 users
- Two built-in stereo loudspeakers
- Mini OPS Slot for flexible enhancement
- Sharp Pen Software
- Sharp Display Connect for latest BYOD wireless inter-connectivity



PN-40TC1/50TC1

- For Huddle Office Meeting Spaces and Interactive Retail Signage
- Fast and Responsive PCAP Capacitive 10 point Touch - up to 4 users
- Mini OPS Slot for flexible enhancement
- Sharp Pen Software
- Sharp Touch Viewing Software for organising collaboration data
- Sharp Display Connect for latest BYOD wireless collaboration



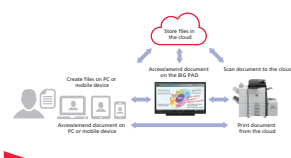
PN-60SC5/70SC5 / 80SC5

- For education and office meeting rooms
- Fast and responsive Infrared 10 point Touch - up to 4 users
- Amazing "Optical Bonding" for brilliant eye-catching image content
- Freeze-Frame and Blackout Buttons
- Sharp Pen Software
- Two built-in stereo loudspeakers
- Sharp Display Connect for latest BYOD wireless inter-connectivity



PN-70TH5

- 70" Premium Interactive Display
- 4K UHD resolution 3840x2160 pixels with UV2A LCD
- 30-Point Projected Capacitive Touch technology for the best "Pen-on-Paper" user experience
- True "4K Reading and Writing"
- New Pen Stylus with 2mm tip



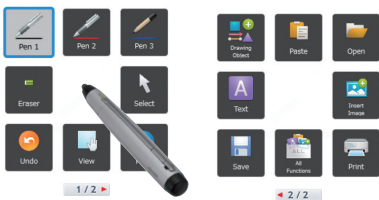
Our mission is to develop innovative products that support individual expression, allowing you to create documents that you let you 'Be Original'.

SHARP Pen Software

Using a supplied touch pen, you can easily launch and display the SHARP Pen Software user interface – a menu comprising smartly arranged icons that provide easy access to pen settings and functions.

Menus can be browsed easily and are displayed in a floating format that allows them to be moved to anywhere on the screen.

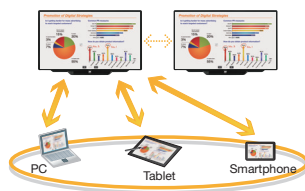
In addition to handwriting and shape recognition, in overlay mode you can write on screen annotations directly onto photos, videos, PDFs and Microsoft Office documents, such as Excel and PowerPoint.



SHARP Display Connect

SHARP Display Connect supports the integration of Bring Your Own Devices (BYOD). Up to 50 participants can connect their mobile devices with a BIG PAD. SHARP Display Connect enables smart phones, tablets and PCs to exchange data, contribute ideas, control the monitor or annotate on the on screen content.

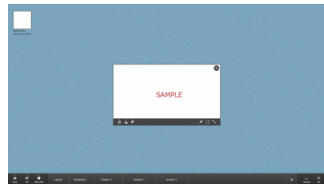
Meetings and presentations will be more interactive and even more creative.



SHARP Touch Viewer

It's easy to open and handle a variety of file types on a BIG PAD using Sharp's Touch Viewing software.

This is a touch-operated on screen user interface that lets you manipulate different types of files, including Microsoft® Office applications, videos, and web pages



Visual Solutions - Professional Signage



PN-R903 / R903A

- Suitable for a variety of indoor locations such as retail locations, educational institutes, conference rooms and public spaces.
- 90" display for professional 24/7 signage
- 1920 x 1080 pixels
- Built-in Stereo Speakers 10 + 10W and UV2A LCD technology
- LED, full array
- 24/7 Operation
- Energy Efficient
- Local area dimming technology
- Landscape & portrait installation support.



PN-R426 / R496 / R556 / R606 / R706

- Suitable for heavy duty and demanding environments
- 42", 49", 55", 60" & 70" display for professional 24/7 signage
- 1920 x 1080 pixels
- Flexible installation with Mini-OPS extension slot
- LED, edge Lit
- Slim Bezel Design with Speakers
- Portrait, Landscape, Face-Up and face-down installation support
- IPS Display Technology



PN-E803 / E703 / E603

- For high impact 24/7 retail and office images
- 60", 70" & 80" display
- 1920 x 1080 pixels
- Attractive slim bezel cabinet with stereo speakers 10 + 10W
- Energy efficient LED backlight with class leading UV2A LCD technology
- 24/7 Operation with built-in temperate regulation
- Latest DisplayPort, HDMI and DVI connectivity
- Full LAN and RS232 remote controllability



PN-A601

- For for 24/7 high-brightness retail signage
- 60" display 1920 x 1080 pixels
- Local Dimming
- Bezel only 19.8 mm
- 24/7 50,000 hours life time max.
- 5 x 5 Multi-screen Capability
- Module Slot System



PN-Y326 / Y436 / Y496 / Y556

- Suitable for heavy duty and demanding environments
- 32", 43", 49" & 55" display for professional 24/7 signage
- 1920 x 1080 pixels
- Simple and Easy Signage with Speakers 5 + 5W and USB Media Player
- LED, edge lit
- Slim Bezel Design
- Portrait, Landscape, Face-Up and Face-Down installation support



PN-Q601K / Q701K / Q801E / Q901E

- Suitable for retail signage, transport signage, way-finding, hospitality and reception areas.
- 60", 70", 80" & 90" diagonal screen size
- 1920 x 1080 resolution in dots
- UV2A technology
- LED, edge lit
- 16/7 operation
- Speakers 10 + 10W and Integrated USB Media Player



Video Walls

Sharp video walls are the perfect solution to show amazing detail over a large display area, without compromise on fine image detail or image size, and guaranteed to make a big impact. With high-brightness capability and the reliable quality to run 24/7, the Sharp video walls can be found in many retail stores, airports and emergency command and control installations.

Sharp BIG PAD Interactive Table: Early Years



Sharp's BIG PAD Interactive Table: Early Years Edition is an interactive and mobile activity board ideal for all Early Years Foundation Stage education and entertainment needs. The robust and durable table uses the latest 10 point touch technology to allow a number of children to draw and mark make directly onto the screen using either their hand or finger.

Self contained mobile solution

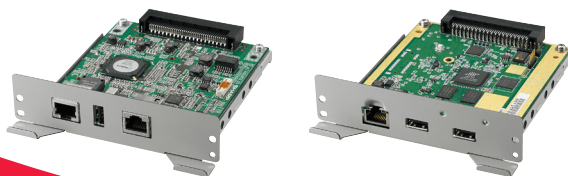
- Full HD resolution for the highest visual clarity.
- Multi-touch screen encourages group play and learning.
- Tilttable and lockable screen makes viewing and touching more accessible for children.
- Self contained, slimline and future proofed solution requires minimal storage space.
- Built-in battery pack allows the Interactive Table to be used up to 11 hours from one charge and completely wire free.

Designed for Early Years

- Built specifically for early years' activities, with a tough and durable, wipe clean glass surface.
- Wheels come with locking brakes for added safety and security.
- Covers areas of the Early Learning goals via fun, educational programmes and apps.

MINI OPS

Mini OPS offers flexible integrated solutions for both interactive touch and non-touch professional displays, and enables new low-power, energy-efficient, compact display form factors to be developed. The Mini OPS development enhances the way display content is received, managed and distributed.





Sharp Business Systems UK Plc

Sharp Business Systems UK Plc offers a comprehensive portfolio of award-winning document management and display solutions to help organisations transform the way they engage with information. Sharp's industry-leading MFPs and large production systems sit at the heart of integrated applications for digital transformation, while display solutions include video walls for immersive entertainment, digital signage and innovative interactive touch screens for engaging presentations. New Optimised IT Services provide SMBs with a single, trusted provider for the total management of their whole IT network. Sharp helps its customers create, manage, visualise and share information, inspiring ideas from technology.

Sharp Business Systems UK Plc
Northern House
Moor Knoll Lane, East Ardsley
Wakefield, WF3 2EE

Tel: 01924 823455

www.sharp.co.uk

SHARP
Be Original.